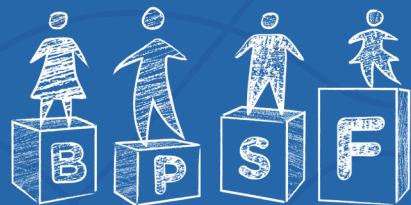




2025

# Gratitude Report

Your Compassion in Action



BELLINGHAM PUBLIC SCHOOLS FOUNDATION

**Rooted in community,  
the Bellingham Public  
Schools Foundation helps  
create a school experience  
that uplifts every student.**





THANK  
YOU!

**This year, the need for direct, basic support was clearer than ever. You stepped up to help over 700 students and families navigate essential needs, while also funding 55 teacher grants across every school in our district.**

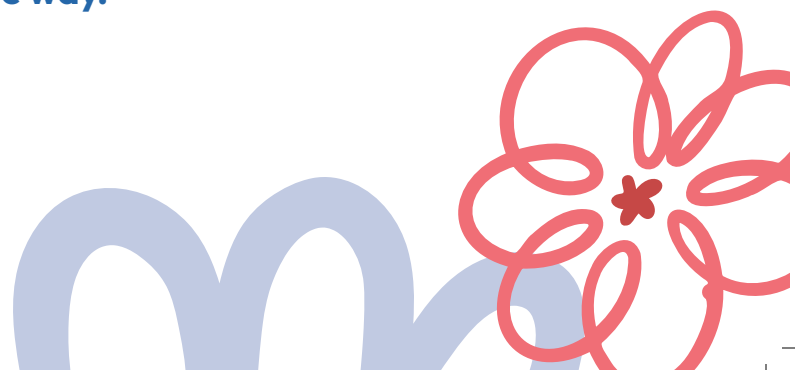
Your donations provided warmth and dignity through new coats and clothes, making it possible for students to walk into their classrooms with pride. For our older students, your support meant high schoolers could afford textbooks for Running Start and the specialized equipment required to pursue their dreams in STEM.

Every gift you give provides the essentials that allow a child to focus on being a student. Whether it's accessing vital mental health counseling or ensuring our after-school learning centers remain a welcoming space with academic support, you are removing the barriers that stand in the way of success.

Your gifts invest in the dreams of our future leaders. Your compassion ensures that no child's potential is limited by their circumstances. **Because of you, our students know that their community is standing right behind them, cheering them on every step of the way.**

Sam Gearhart

Sam Gearhart  
Executive Director



# Basic Needs

**When basic needs are met, students are able to focus, learn, and thrive. Your donations have funded immediate assistance to our most vulnerable families, providing food, clothes, hygiene products, rent, and habitability necessities.**



Thank you for the opportunity to buy a bike lock and helmet. They are very helpful to protect the bike and keep me safe from hitting my head on the hard ground.

—Community Transitions Student

“One of my students came back after break with a new Spiderman beanie that he loved. He wore it to all recesses and you can tell it was really special to him.” But the hat disappeared, just as the weather turned colder. “Every day he came in asking if I found the Spiderman hat and his face would drop when I told him no.”

This teacher’s Yes Card request was simply “Winter Hat.” But your donation provided much more than just a warm weather necessity.

Your generosity gave his teacher the opportunity to surprise him with a new special Spiderman hat—and show him he was part of a caring community that knows and loves him.



One second-grader was in class when her father—a single parent—was taken in an ICE raid during the workday. A school staff member escorted her home, and stayed at her side as ICE officers combed through her home. It took weeks to determine that her father was in the United States legally, and during that time he was equipped with an ankle monitor that kept him from working. Your donations kept this 2nd grader fed, paid the family’s rent to keep them housed, and eventually provided the \$560 dad needed to get a work permit. **Thanks to you, her dad is back at work and the family is stable and at home.**



YOUR FUNDING IMPACT:

**784**

students and families  
received basic needs  
support from BPSF



# How You Make an Impact

## Educator Grants

**The Educator Grants you funded do something extraordinary—direct donations to teachers, for the projects they know will impact students.** Whether it's a creative pilot or an urgent need, they can apply for an Educator Grant to make it happen.

In this year alone, your Educator Grants included projects that touched STEAM, social and emotional health, curriculum, and basic needs.

Your gifts gave Carl Cozier Elementary fifth-graders the opportunity to learn about how artistic composition mimicked literary composition, with an Allied Arts partnership. Bellingham High School students were able to build teaching skills by sharing robotics lessons (and play!) with Alderwood Elementary kiddos. Birchwood Elementary students used Educator Grant funding to establish their Creando Connections program and podcast, giving 4th and 5th grade Latino students a space to learn, share, and affirm their culture and place in the community.

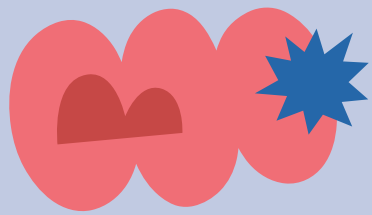
## Libraries and Learning

**Teachers at Sunnyland Elementary applied for a grant to buy resources that more directly aligned with their updated literacy curriculum.** They hoped to see that the tools would be able to translate to literacy gains—and with your donations, they've seen reading scores climb.

We know that when kids have access to the right materials, they succeed. And sometimes the right materials are simply the ones they'll happily use; that's why your donations have funded grants for all Title I libraries to make sure there are robust materials to spark interest for kids. This year donors also funded all elementary schools to expand their multilingual libraries; 26 languages other than English are spoken at home, and giving kids access to books in their home languages helps engage and affirm bilingual learners.

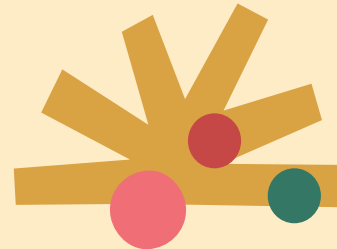
## Unified Sports

**A barrier to play only exists without accommodation.** Unified Sports gives students with and without disabilities a chance to play on the same team. Your donations pay for staff paraeducators to take the field with our athletes to provide one-on-one support—guaranteeing that every kid can participate in sport, across the district.



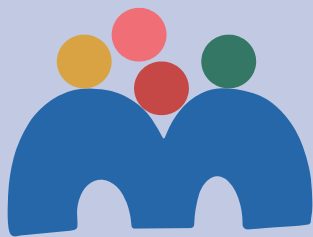
# 4700

students supported  
through your donations



# 55

Educator Grants were funded  
by your dollars this year



# 12

paraeducators funded for  
200 hours of student play



# How You Make an Impact

## STEAM

**Providing resources and access to STEAM learning continues to be a growing need.** Your gifts sent students to national championships in Robotics, Bridge Building, and DECA. Elementary classes built and deployed marine rovers to explore sea life at Taylor Dock, while middle school students gained experience in outdoor orienteering, and budding aviators in high school secured flight simulator equipment. You supported arts in our schools by giving elementary students resources and instruction in collaboration with Allied Arts, allowed high schoolers to kickstart a poetry anthology, and more.

## Equity

**The BPSF is a strong advocate for the One Schoolhouse approach, which focuses on an equitable experience for every school and student.** Our elementary parent groups have long recognized that distribution across schools varies widely; within our 14 elementary schools, the lowest spend less than \$20 per student while the highest can afford more than \$100 per student spending.

**LOOKING FORWARD:** The BPSF is working with our parent groups to close that gap so field trip opportunities and other parent group-sponsored activities and resources are shared equally by kids across the district.

## Learning Centers

**Your gifts were able to keep high school learning centers running after school.** When budget cuts threatened staffing, the BPSF was able to step up and maintain afterschool hours for our high school learning centers, keeping a central space accessible for students who need academic support, a quiet place to study, or a safe space to pick up a snack or regulate.

## Student Well-Being

**One emerging request that came up over and over this year was the need for student social and emotional support, through dedicated spaces like sensory rooms.** Through a 2024–2025 pilot program at Sunnyland Elementary, the BPSF was able to demonstrate strong outcomes for a space designed for regulation.

**LOOKING FORWARD:** The BPSF is expanding funding for sensory rooms to all elementaries across BPS, working in partnership with the district to source and standardize the most effective tools.

“Thank you for giving my class a \$1,000 check for our engineering project. This was important because it helped me and many other people know what it looks like under Taylor dock. It also helped people be more creative and become engineers. This inspired people to learn about the Salish sea and the creatures that live there.”

– Northern Heights 5th grade student



Office referrals have decreased almost

**20%**

since Sunnyland introduced the Sensory Room

“Funding our hours shows us that others see the work is worth it.”

– Sehome Cove  
Afterschool Staffer



# How we spent your gifts:

## INCOME

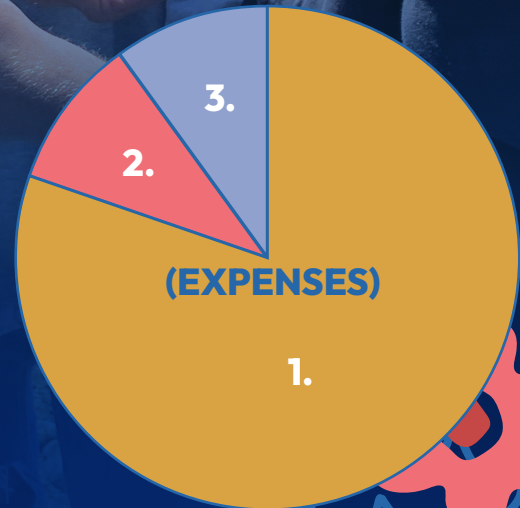
Donations from Individuals	\$574,484
Grants	\$130,117
Investments + Other Incomes	\$84,718

**TOTAL INCOME** **\$789,320**

## EXPENSES

Direct Program Funding	\$581,022
Operations (G&A)	\$69,713
Fundraising	\$71,740

**TOTAL EXPENSE** **\$722,475**



1. This is funding that goes directly to support teachers, students, and families, paying for things like grants and YES cards.
2. This funding supports all programs by keeping things running, paying for things like administrative salaries and utility bills at BPSF.
3. The funds we use to raise even more funds, multiplying your impact.

# Ways to Give



## DONATE

### Flexible Support

Giving to BPSF puts resources directly into the hands of the students, staff, and families who need them most.

### Make a Monthly Impact

Our monthly donors provide reliable, steady support that allows us to quickly react to student need. A recurring giving option is available online.

### Leave a Legacy

Many members of our community choose to make an impact through Legacy Planning or Gift of Stock. Please contact us at 360-646-6479 to learn more.



[bellingshamschoolsfoundation.org](https://bellingshamschoolsfoundation.org)

Contact:

[info@bellingshamschoolsfoundation.org](mailto:info@bellingshamschoolsfoundation.org)  
360-676-6479





**[bellingshamschoolsfoundation.org](http://bellingshamschoolsfoundation.org)**

[info@bellingshamschoolsfoundation.org](mailto:info@bellingshamschoolsfoundation.org)

360.676.6479

Tax ID: 91-1551087